

Foiled Spaceloft® Aerogel Insulation Panel

Description

Foiled Spaceloft® aerogel panels are supplied in 600mmx1450mm sizes and start from 10mm thick up to a maximum of 40mm. They provide a highly efficient vapour and airtight insulation layer with 10mm saving 62% heat loss right up to 40mm saving 89% heat loss.

Application

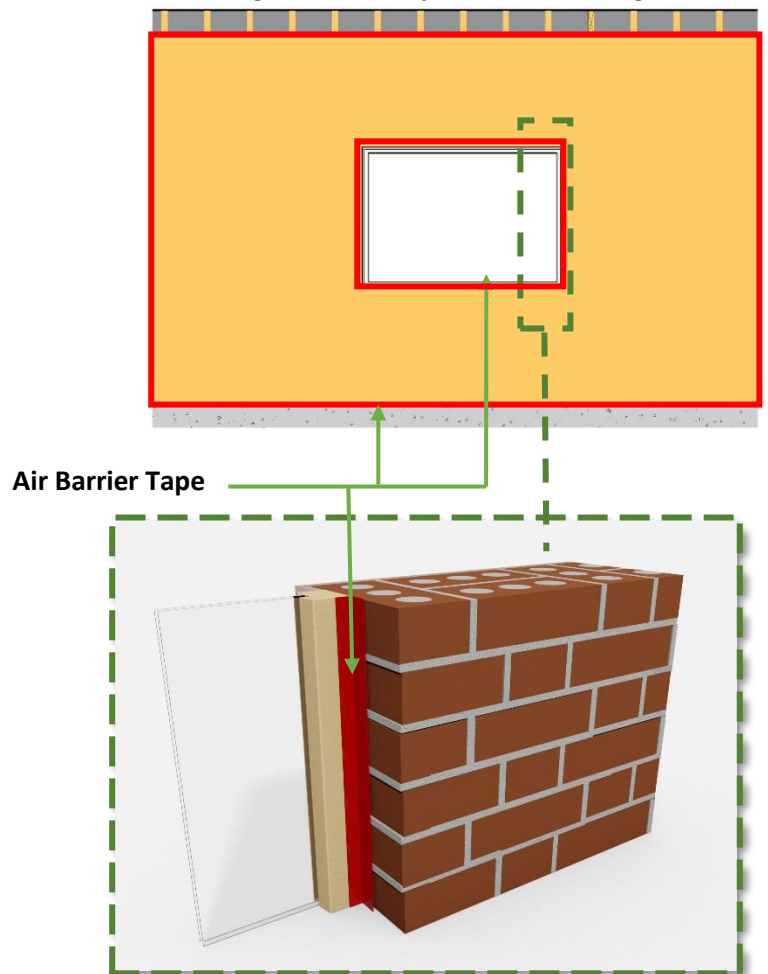
The panels are simply cut to size and adhered to the wall with Tec 7 (or similar approved). All the joints between the panels are taped with foil tape provided and all the perimeter junctions of the room (wall, floor, ceiling, windows) are taped using a high grab air barrier tape similar to Alpha Power Tape.

Procedure

- 1- Make sure all walls and window/door reveals are clear of debris and mould.
- 2- Before Installing the Insulation Panels, tape all floor, wall and ceiling junctions with air barrier tape – Also tape the junction between the window frame and the reveal and in doing this the wall junctions are airtight

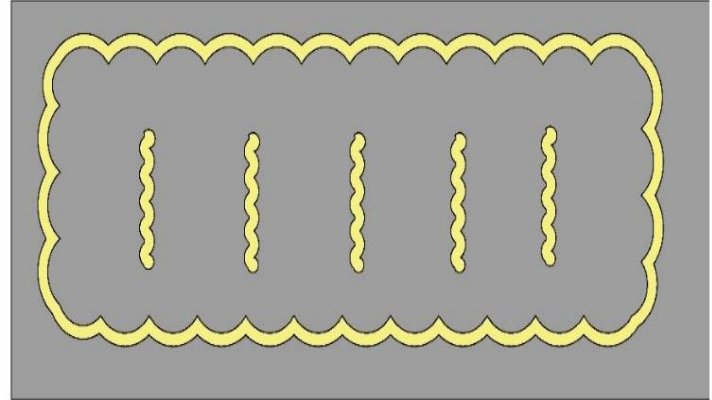


Air Barrier Tape

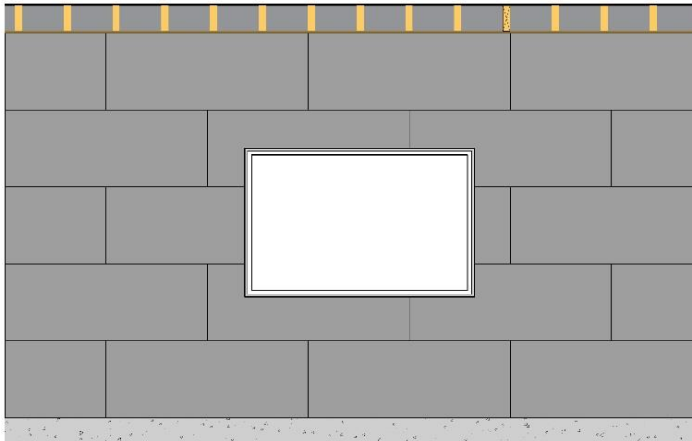


Foiled Spaceloft® Aerogel Insulation Panel

- 4- Starting at the bottom left (or right) hand corner start adhering the Spaceloft® Panels to the wall with the adhesive.



Adhesion pattern – Fig 2



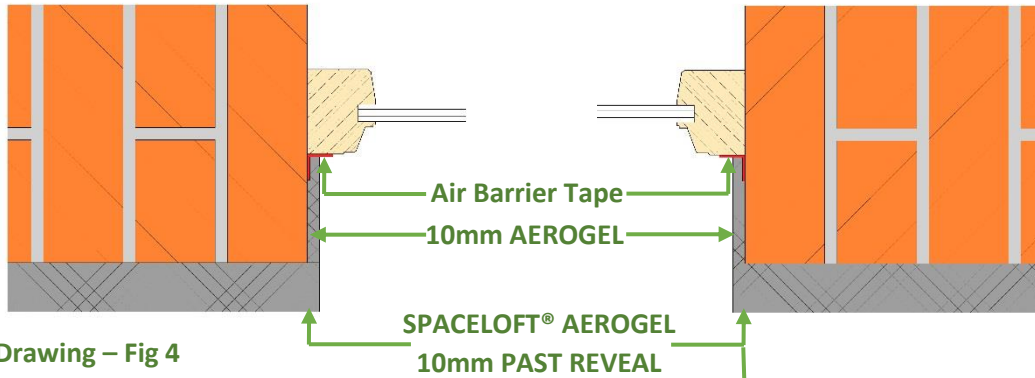
Installation Pattern – Fig 3

- 5- Last panel on first row – measure the distance and then cut the panel by adding pressure on the blanket with a flat straight edge and using a sharp Stanley knife cut across the blanket. The offcut is then used as the first panel on the second row which creates a “Brick Pattern” of Spaceloft® panels.

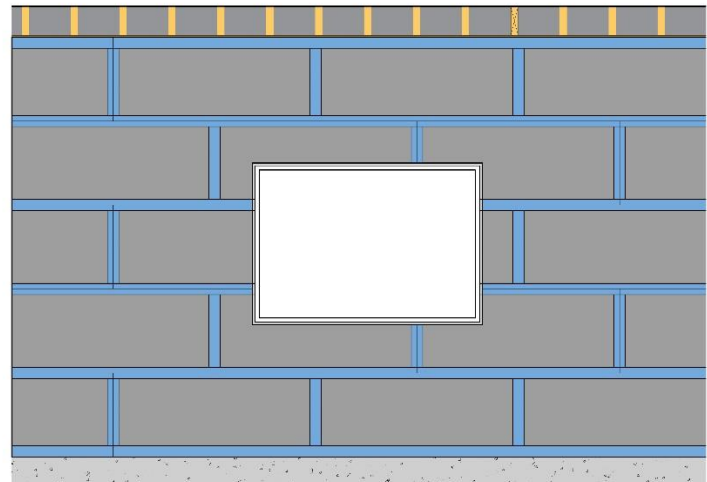
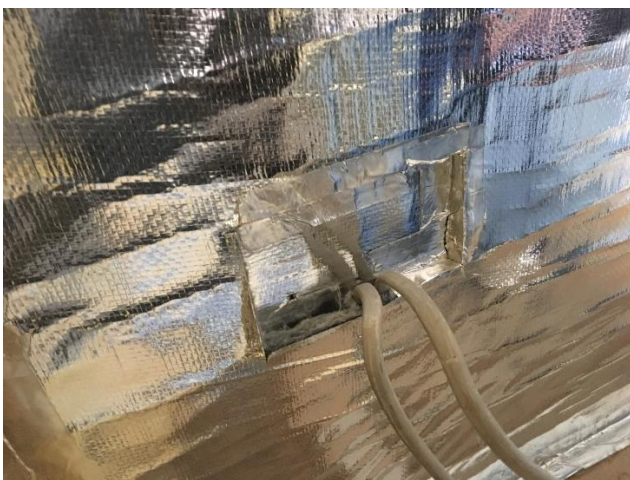


Foiled Spaceloft® Aerogel Insulation Panel

- 6- Window / Door openings – Cut panels around window openings making sure the edge of the panels overhang the edge of the reveals. This allows a 10mm cut piece of blanket to be inserted into this space and prevent any thermal bridging at this junction.



- 7- Once all the panels are adhered to the wall and the reveals insulated tape all the joints between the panels with the foil tape including all the wall, ceiling, floor and reveal junctions (already done with airtight tape). Where there is sockets ensure that the edge are taped and sealed.



ADDRESS

Taping Joints – Fig 5
16 Milltown Industrial Estate
Upper Dromore Road
Warrenpoint
Co Down
BT34 3PN

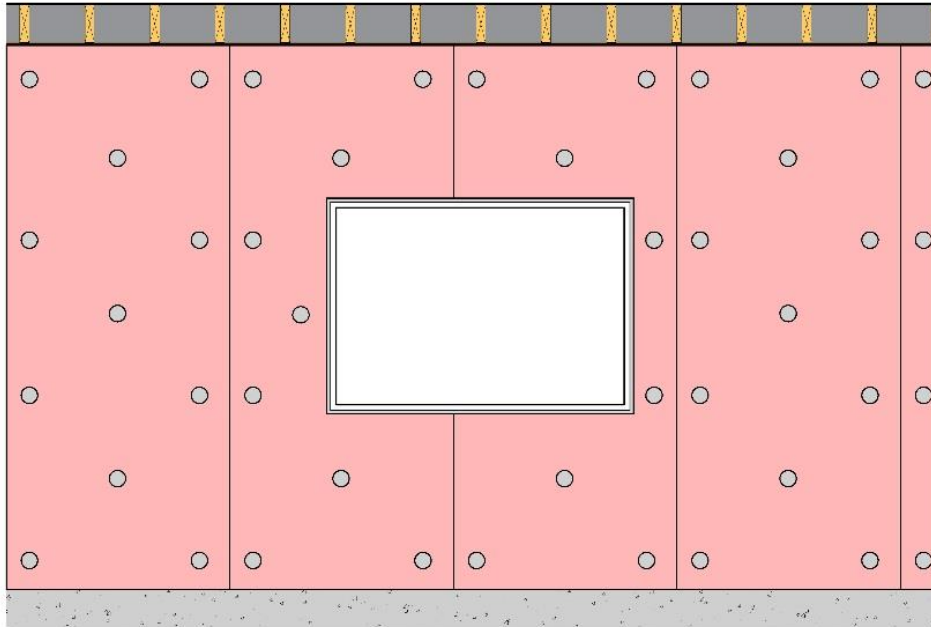
TELEPHONE +44 (0)28 4177 3314

EMAIL

info@enviroform-insulation.com

Foiled Spaceloft® Aerogel Insulation Panel

- 8- Using the thermally broken fixings provided fix the plasterboard to the wall through the insulation layer into the wall.
- 9- Dryline or skim and finish.



Plasterboard / Fixing – Fig 6



enviroform
www.enviroform-insulation.com

ADDRESS 16 Milltown Industrial Estate
Upper Dromore Road
Warrenpoint
Co Down
BT34 3PN

TELEPHONE +44 (0)28 4177 3314

EMAIL

info@enviroform-insulation.com