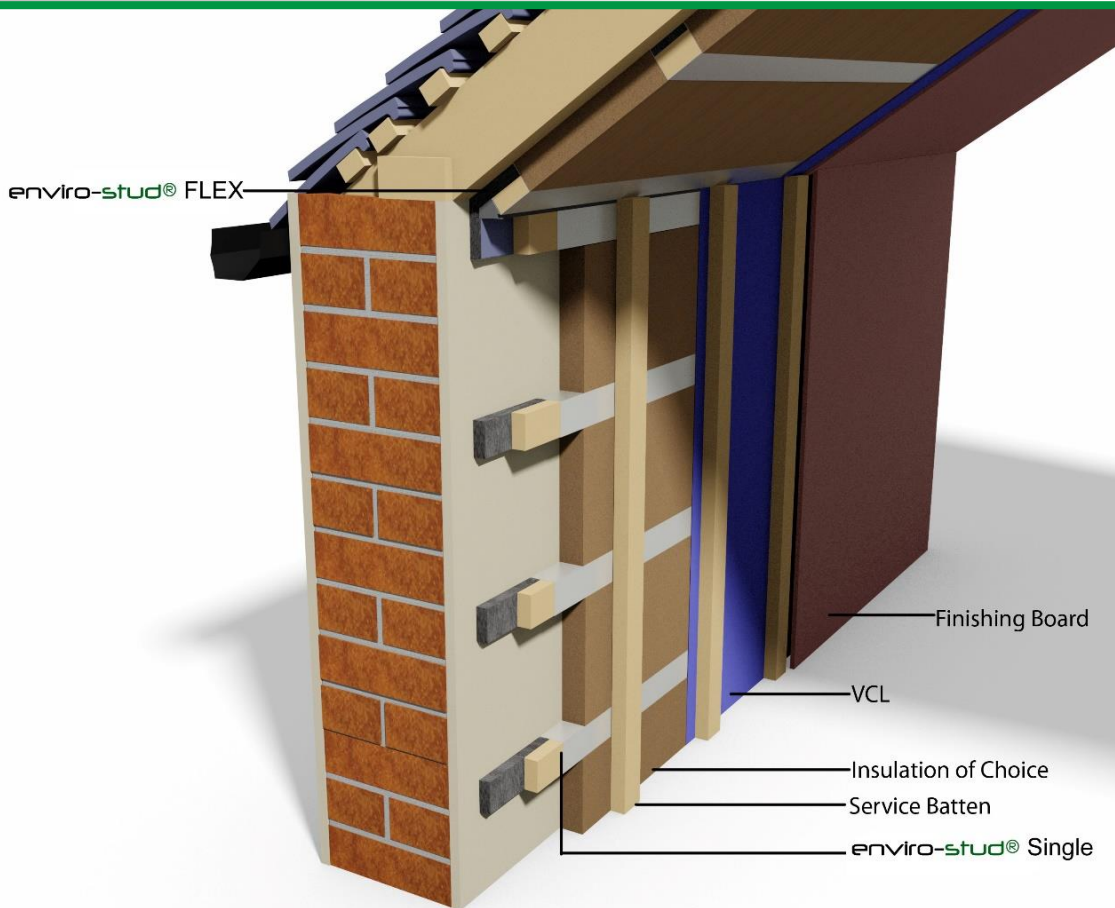


# enviro-stud®

## Thermally Insulated Studs



- Faster Installations.
- No thermal breaks in Insulation.
- Vapour Open Option.
- Vapour Closed Option.
- Different insulation types can be introduced.
- Curved or Angle Interfaces made easy.



enviroform

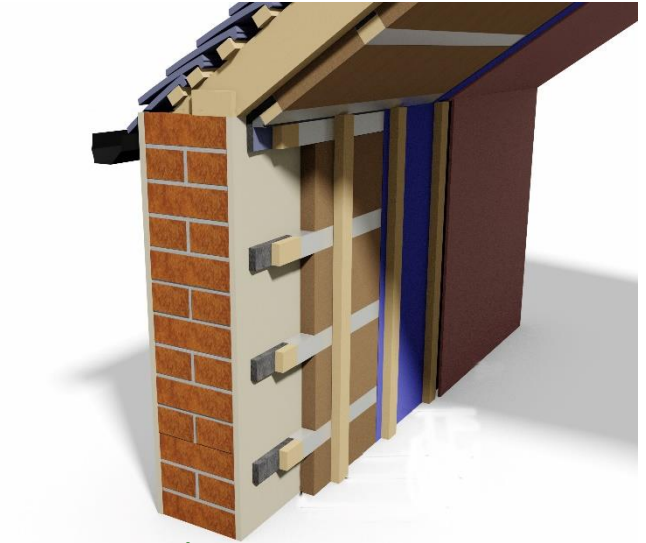
# enviro-stud®

## Introduction

**enviro-stud®** was developed to further enhance best practice when retrofitting internal insulation onto walls floors and ceilings.

**enviro-stud®** utilizes the excellent thermal properties of Spaceloft Aerogel insulation with the natural properties of sustainable timber battens finished in a robust foil, to provide an Easy To Install product.

**enviro-stud®** is supplied in two types, **enviro-stud®** Single (ES) and **enviro-stud®** Flex (ESF) and four standard thicknesses to suit varying depths of the insulation of your choice.



enviro-stud® / Wood Fibre

## enviro-stud® Single - ES

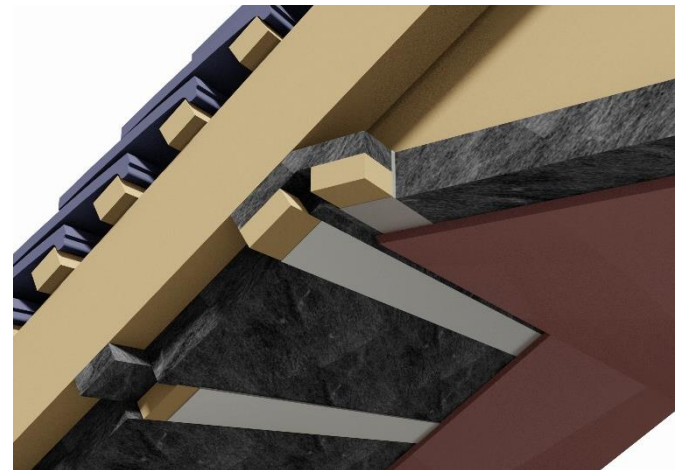
ES is fixed horizontally onto walls or perpendicular to ceiling joists at 600 mm centres. The insulation of choice, Spacelot Aerogel, PIR, Wood fibre or Mineral Wool can be then installed between the battens. The system can be kept vapour open depending on the insulation used, or a vapour control layer added to the surface of the battens. For best practice a 20/25mm Timber batten is fixed vertically to **enviro-stud®** providing a service zone in front of the insulation and an airtight layer. Then simply add the finishing board of choice.



enviro-stud® / PIR

## enviro-stud® Flex - ESF

ESF was developed to guarantee a continuous insulation and vapour tight layer at Wall / Roof / Floor interfaces. The flexible design allows the product to fit into any angle that you may encounter during your retrofit, with no loss of thermal resistance under compression or bending.

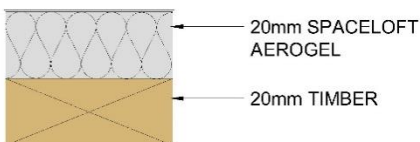


enviro-stud® / Spaceloft Aerogel

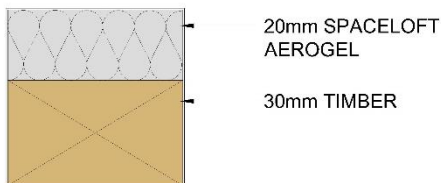
## 1 enviro-stud® SINGLE

enviro-stud® ES enviro-stud® SINGLE		
PRODUCT CODE	O/A THICKNESS (mm)	R-VALUE (m <sup>2</sup> K/W)
ES 20/20	40	1.487
ES 20/30	50	1.564
ES 20/40	60	1.641
ES 40/60	100	3.128

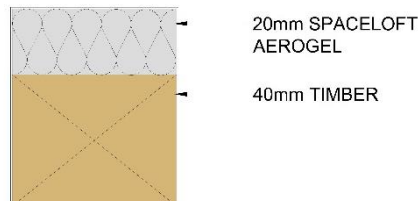
### ES 20/20



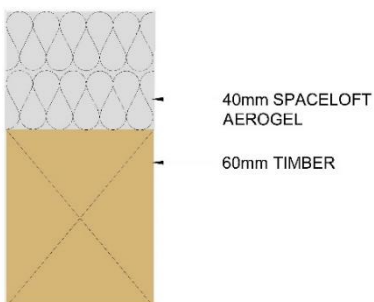
### ES 20/30



### ES 20/40



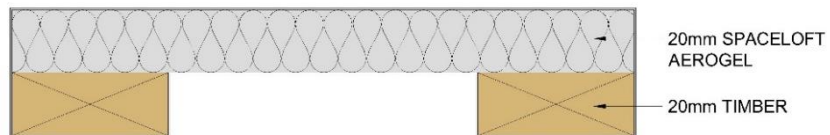
### ES 40/60



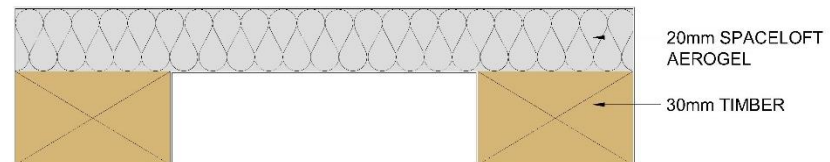
## 2 enviro-stud® FLEX

enviro-stud® ESF enviro-stud® FLEX		
PRODUCT CODE	O/A THICKNESS (mm)	R-VALUE (m <sup>2</sup> K/W)
ESF 20/20	40	1.333
ESF 20/30	50	1.333
ESF 20/40	60	1.333
ESF 40/60	100	2.667

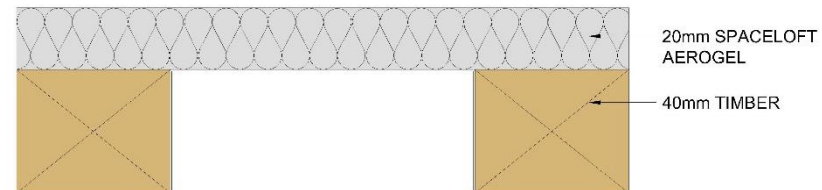
### ESF 20/20



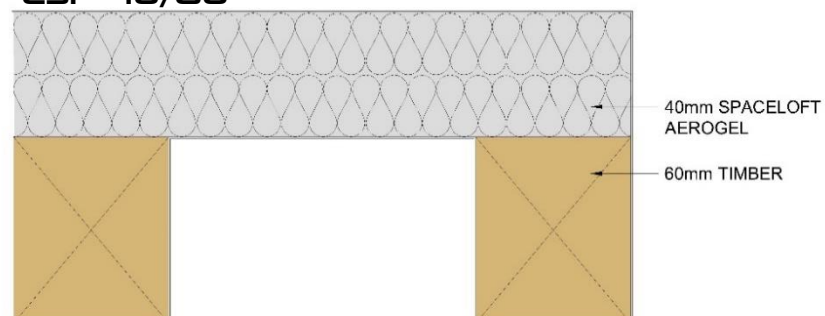
### ESF 20/30



### ESF 20/40



### ESF 40/60



**TELEPHONE**

+44 (0)28 4177 3314

**EMAIL**

[info@enviroformsolutions.com](mailto:info@enviroformsolutions.com)



**ADDRESS**

16 Milltown Industrial Estate  
Upper Dromore Road  
Warrenpoint  
Co Down  
BT34 3PN